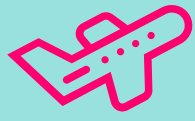
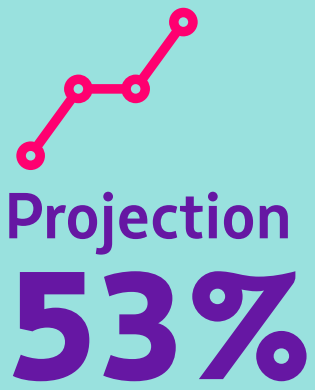


**LATAM GROUP  
PROJECTS OPERATIONS  
OF 53% FOR  
SEPTEMBER**

Compared to the same month in 2019, the projected operation is estimated to reach 53%. For December of this year, the group estimates an operation (measured in ASK) of up to 70% versus the same month of 2019.

**LATAM  
Group**



Domestic and international flights  
**970**

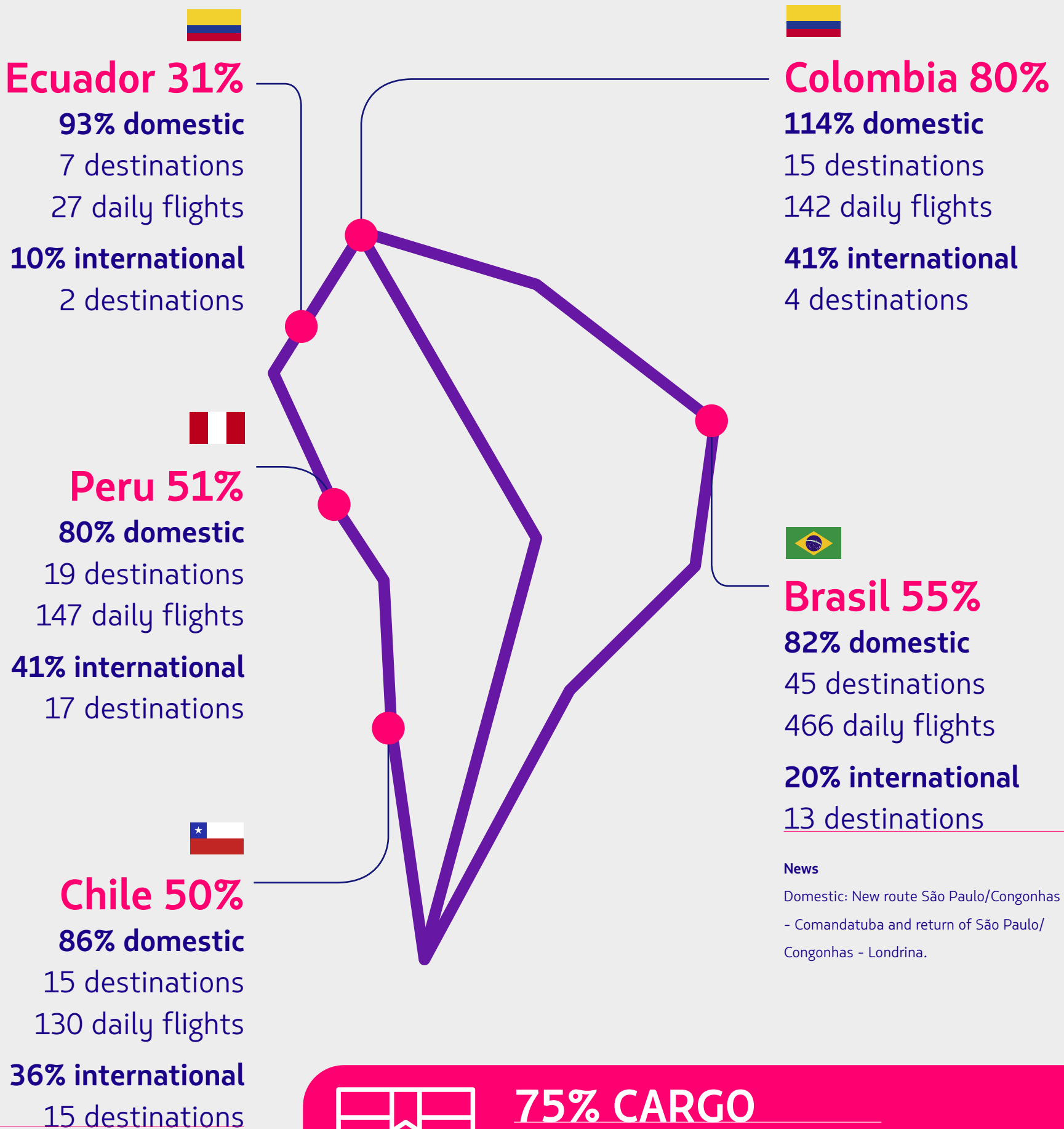
**Destinations**



Cargo flights  
**990**

**WHAT IS THE LATAM GROUP'S OPERATING ESTIMATE?**

**SEPTEMBER 2021 VS SEPTEMBER 2019** (ASK Measurement: Available Seat Kilometers)



**News**  
Domestic: New route São Paulo/Congonhas - Comandatuba and return of São Paulo/Congonhas - Londrina.

**News**  
International: Return of the direct route Santiago - Cancún.



**75% CARGO**  
**69% belly domestic**  
**45% belly international\***

\*Belly: goods transported in the cargo hold (lower deck) of the aircraft.